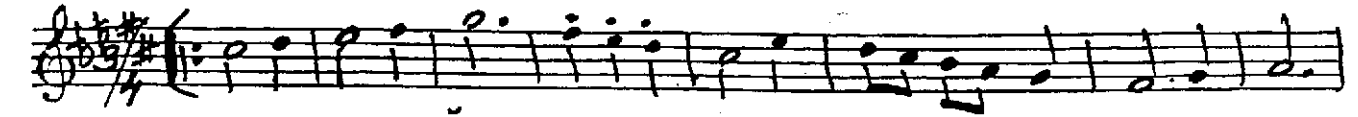


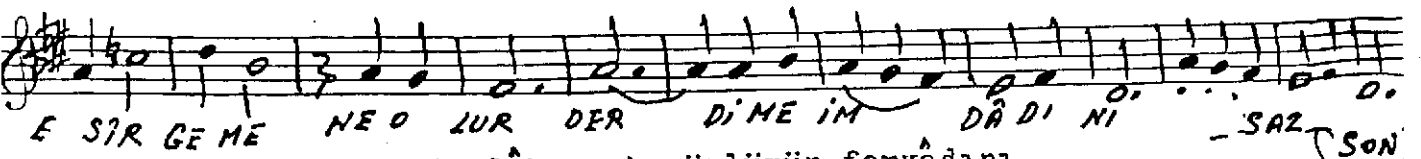
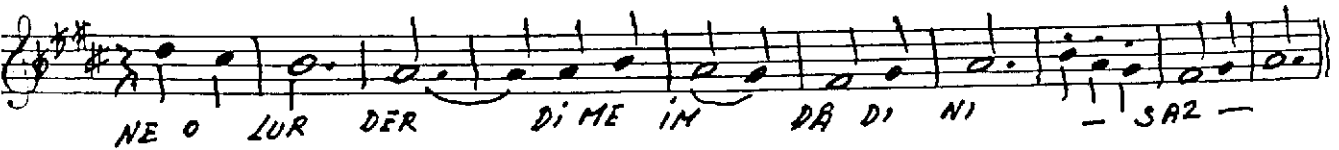
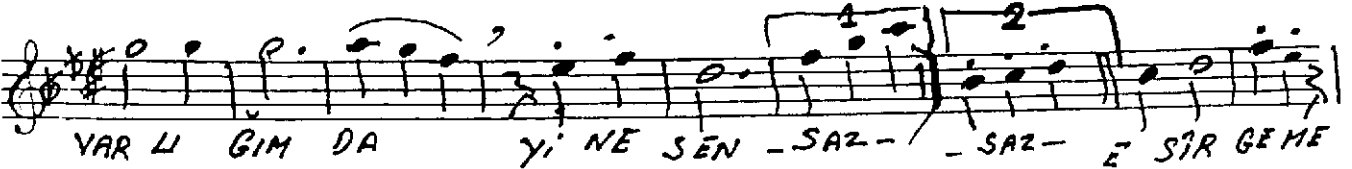
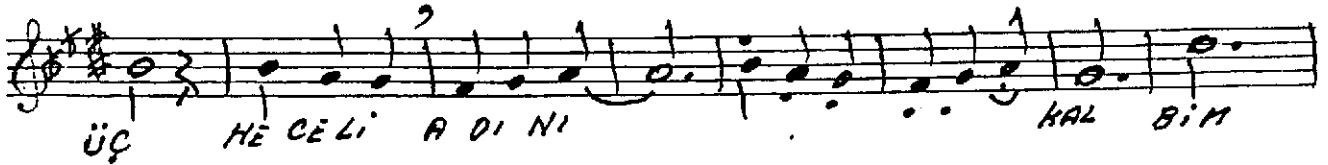
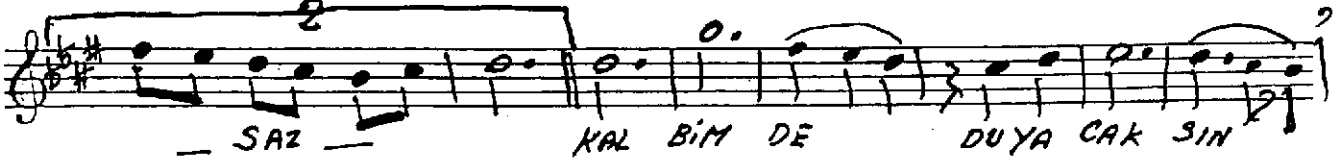
ŞEDARABAN ŞARKI
(DİNLESEN BİR LÂNZA)

♩: 132.) SEMA-İ

Beste: Rüştü Eriç
Söz : Mustafa Nâfiz Bey



— Aranağme —



Dinlesen bir lâhzacık gönlümün feryâdını
Kalbimde duyacaksın üç heceli adını
Hayâlimde senvarsın, varlığımda yine sen,
Esirgeme ne olur derdime imdâdını.....

95. 11. 1993
Aytaç ERGEN